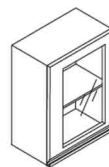


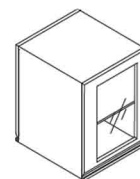
Laboratory Corner Cabinet

◆ Product Description

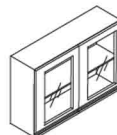
Wall Cabinets are core auxiliary storage equipment for vertical space utilization in laboratories. They are installed on walls or above laboratory benches through wall-mounted or recessed installation, with "not occupying floor space" as their core advantage. they address the storage needs of reagents, consumables, and backup instruments, while also adapting to the special environments and safety regulations of different laboratories.



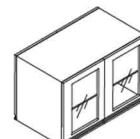
YF-DG-450-1



YF-DG-450-2



YF-DG-900-1



YF-DG-900-2

◆ Typical Product Data and Physical Properties

- Efficient utilization of vertical space, saving floor and worktop area
- Scenario-based adaptation of corrosion-resistant materials, resisting harsh laboratory environments
- Safety protection design, avoiding risks of overhead storage
- Flexible storage structure, adapting to various item sizes
- Adaptation in installation and function, compatible with laboratory layouts and operations

◆ Product Structure

- The main body of the wall cabinet is made of 1.0mm Baosteel cold-rolled steel plate, and is exquisitely manufactured through a series of complex processes including punching and shearing, bending, welding, grinding, and polishing. it uses high-end environmentally friendly powder (for spraying) and adopts a 500m automatic spraying line. With intelligent constant temperature curing, the surface has good gloss and no impurity particles.

Model	YF-DG-450-1	YF-DG-900-1	YF-DG-450-2	YF-DG-900-2
Dimensions (L*W*H)	L450*W300*H600MM	L900*W300*H600MM	L450*W600*H600MM	L900*W600*H600MM
Main Body Material	1.0MM steel plate, epoxy resin electrostatic spraying			
Edge Wrapping Material	G-type handle /stainless steel handle		G-type handle /stainless steel handle	
Laminate Material	High-quality buffered door hinge		High-quality buffered door hinge	
Power Socket	Solid steel door /glass door		Solid steel door /glass door	

Availability:

Item#	Model	Weight
1.4.26.01.0006	YF-DG-450-1	15kg
1.4.26.01.0007	YF-DG-900-1	20kg
1.4.26.01.0008	YF-DG-450-2	15kg
1.4.26.01.0009	YF-DG-900-2	20kg

◆ Typical Applications

- Wall cabinets are mainly used for storing documents, materials, and items. according to different application scenarios, they can be divided into single-door wall cabinets (left and right types), double-door wall cabinets, and four-door wall cabinets (with middle partitions).

◆ Technical and Application Assistance

HORB provides a technical hotline to answer your technical and application related questions.

◆ Note:

This information is believed to be accurate. It is intended for professional end users having the skills to evaluate and use the data properly. HORB data for reference only

KANBO is registered trademark of HORB. All rights reserved.